

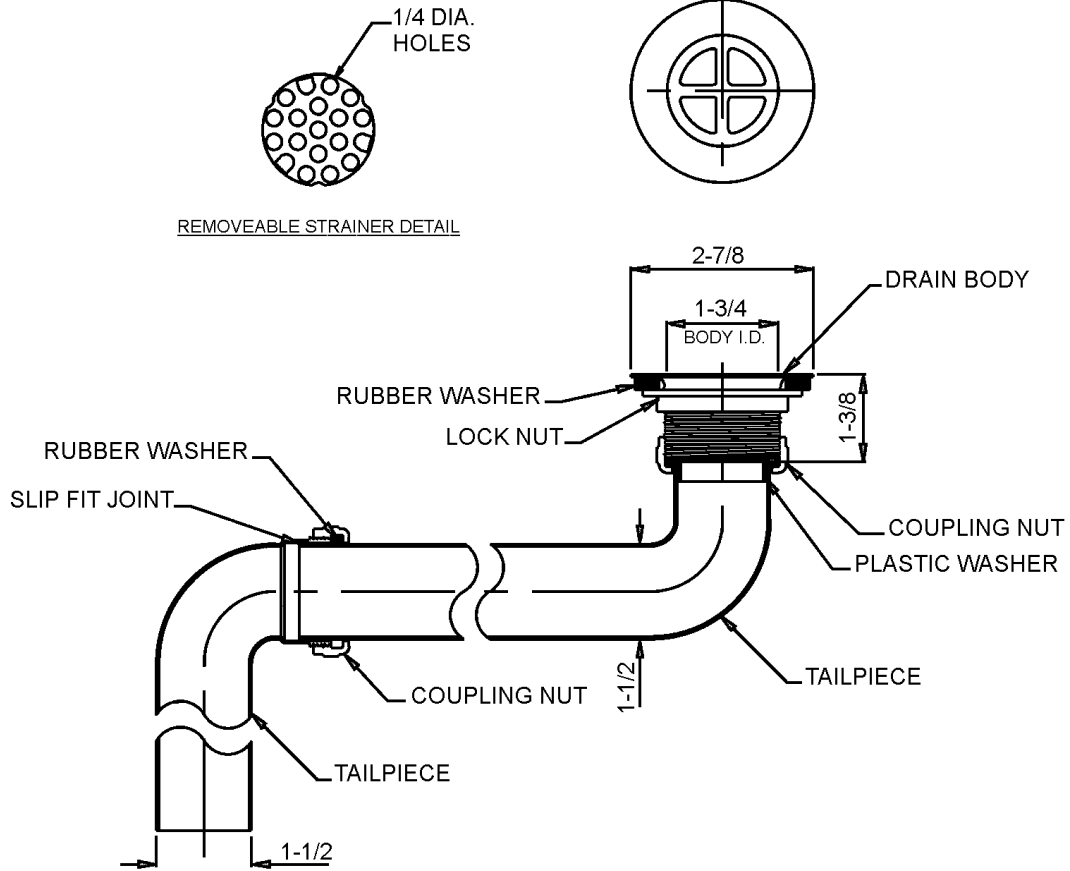


**FITTINGS GROUP**

**J-ADA-15-FS**

**ADA Compliant  
Drain Assembly**

**SUBMITTAL DATA**



**TECHNICAL DATA**

**DRAIN:**  
Chrome plate brass

**LOCK NUT:**  
Die-cast chrome plated

**TAILPIECE:**  
17 GA. Chrome plate brass

**VARIANTS**  
Brass coupling nut

Job Name _____	
Customer _____	
Architect/Engineer _____	
APPROVED FOR MANUFACTURING	
MODEL NO. _____	QTY. _____
COMPANY _____	
TITLE _____	DATE _____
SIGNATURE _____	

**Dimensions tolerance +/- 1/4".**  
**Dimensions may vary and are subject to change. No responsibility is assumed for use of superseded or voided data.**

FUNCTIONAL DESIGN, QUALITY, AND SPECIFICATIONS LISTED DESCRIBE THE JUST STANDARD OF QUALITY. WHEN MAKING COMPARISONS WITH OTHER OFFERINGS, INSIST ON THE JUST QUALITY OF CONSTRUCTION. FOR ADDITIONAL INFORMATION REGARDING THE COMPLETE LINE OF **JUST SINKS**, FAUCETS AND DRAINS, VISIT OUR WEB SITE AT [www.justmfg.com](http://www.justmfg.com)

<b>JUST MANUFACTURING COMPANY</b>	
9233 KING STREET . FRANKLIN PARK . ILLINOIS . 60131-2111	
PH: 847-678-5150 . FAX: 847-678-6817	
E-MAIL: <a href="mailto:custserv@justmfg.com">custserv@justmfg.com</a> . <a href="http://www.justmfg.com">www.justmfg.com</a>	

REVISED-5/2004