



B-36033-48-C

INSTITUTIONAL GROUP

URINAL

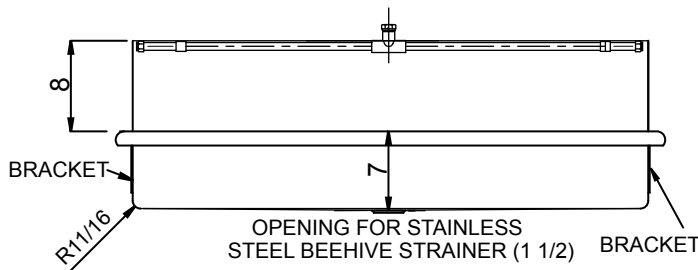
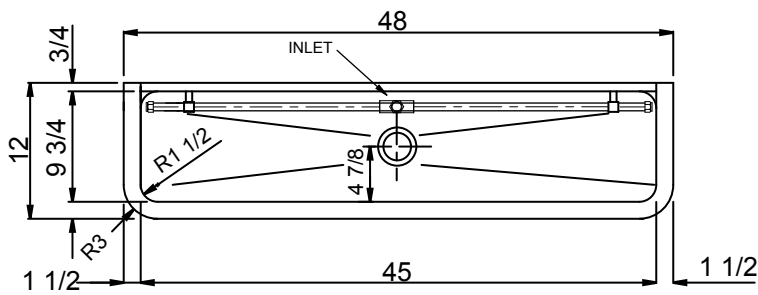
FLUSH PIPE with CENTER TEE

SUBMITTAL DATA



SPECIFICATION

Seamless welded construction, fabricated of 16 gauge stainless steel. 1-1/2" dia. roll rim on front and sides. Interior surfaces polished to a Hand-Blended Just Finish. Exposed exterior surfaces polished with a standard brush finish. Underside and rear coated to insulate for sound and reduce condensation. Furnished with 1 1/2" beehive strainer, 1/2" I.D. chrome plated brass washdown pipe, with slip fit center tee - 3/4" supply tube. Support by two 14 gauge type 304 stainless steel wall brackets, and two 14 gauge stainless steel wall clip. Drain punch for 1 1/2" beehive strainer.



APPROVED FOR MANUFACTURING

MODEL NO.: **B-36033-48-C** QTY: _____

JOB NAME: _____

TAG/ITEM: _____

CUSTOMER: _____

SIGNATURE: _____



JUST MFG. COMPANY CONTINUES TO MAKE QUALITY AND FUNCTIONALITY A MARK OF THE JUST PRODUCT LINE. TO DO SO REQUIRES THAT WE RESERVE THE RIGHT TO CHANGE PRODUCT INFORMATION WITHOUT NOTICE. DIMENSIONS MAY VARY AND ARE SUBJECT TO CHANGE WITHOUT NOTICE. NO RESPONSIBILITY IS ASSUMED FOR USE OF SUPERCEDED OR VOIDED DATA. FOR THE MOST CURRENT AND ACCURATE INFORMATION REGARDING THE COMPLETE LINE OF JUST SINKS, FAUCETS AND DRAINS, CLICK ON THE **SPEC LINE DRAWINGS** LINK ON OUR WEB SITE AT www.justmfg.com

JUST MANUFACTURING COMPANY

9233 KING STREET . FRANKLIN PARK . ILLINOIS . 60131-2111

PH: 847-678-5150 . FAX: 847-678-6817 . E-MAIL: custserv@justmfg.com . www.justmfg.com



B-36033- SERIES URINALS

ROUGH-IN DATA

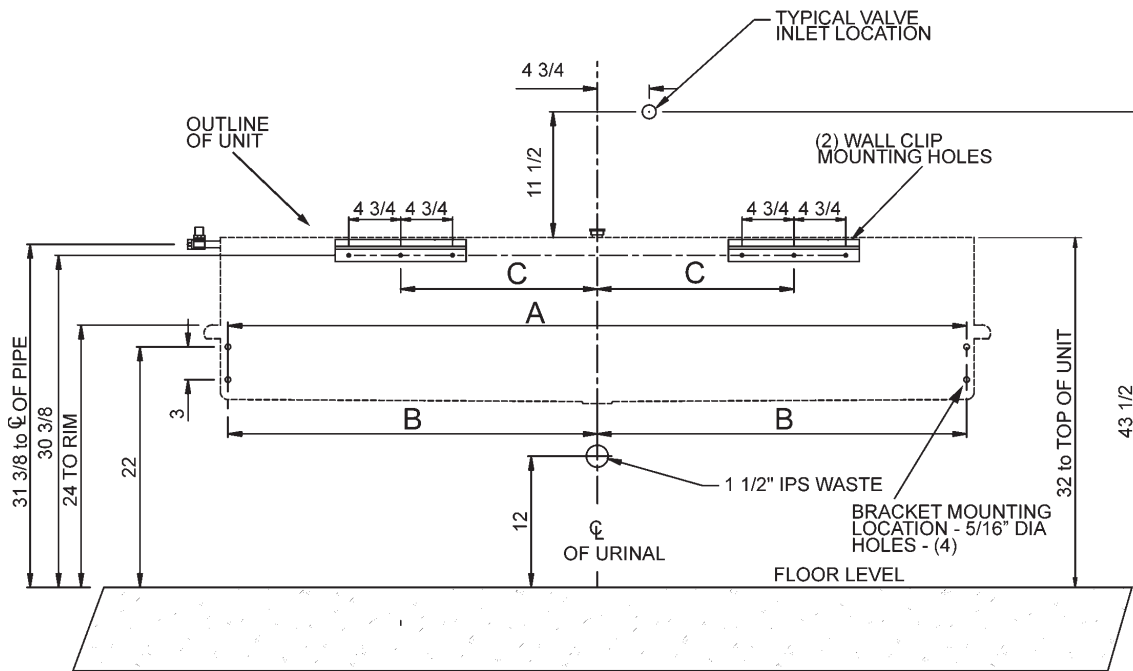
INSTITUTIONAL GROUP

URINAL

FLUSH PIPE with CENTER TEE

SUBMITTAL DATA

SUBMITTAL DATA



URINAL ROUGH-IN DATA			
MODEL NO.	A	B	C
B-36033-48	43-5/8	21-13/16	14
B-36033-60	55-5/8	27-13/16	18
B-36033-72	67-5/8	33-13/16	18

JUST MANUFACTURING COMPANY

9233 KING STREET . FRANKLIN PARK . ILLINOIS . 60131-2111

PH: 847-678-5150 . FAX: 847-678-6817 . E-MAIL: custserv@justmfg.com . www.justmfg.com