



**INSTITUTIONAL GROUP**



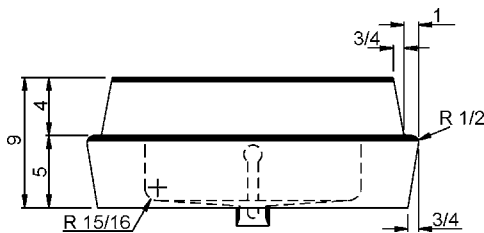
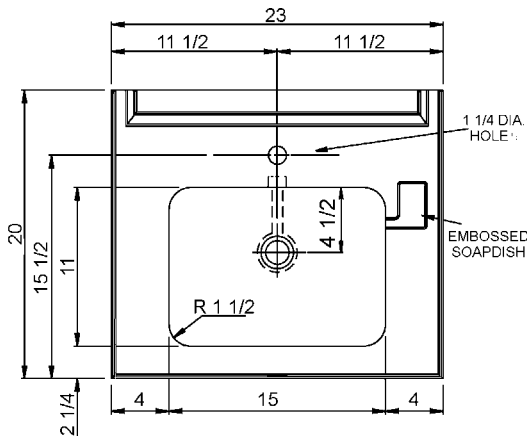
**B-21429-S**

**HANDICAP LAVATORY WITH SENSOR-OPERATED FAUCET**

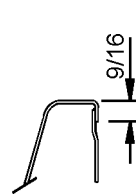


**SPECIFICATION**

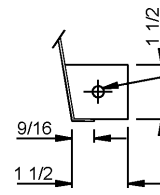
Seamless welded construction, fabricated of 18 gauge type 304 stainless steel. Interior surfaces polished to a Hand-Blended Just Finish. Exposed exterior surfaces polished with a standard brush finish. Includes: one each, JSL-100 deck mounted, sensor-operated faucet with laminar flow control; JTM-47 thermostatic mixing valve; J-ADA-115-FS flat grid lavatory drains with overflow; JT-125 cast brass P-Trap; mounting clip integral to apron and one 14 gauge stainless steel wall clip.



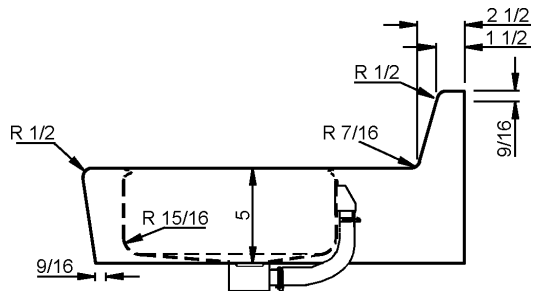
OPENING FOR J-ADA-115-FS DRAIN



**SECTION THROUGH BACKSPLASH**



**SECTION THROUGH APRON**



**SECTION THROUGH SINK**

**FAUCET - Must be specified**

JSL-100-AC - w/plug-in power adapter
JSL-100-B - w/battery holder

JUST MFG. COMPANY CONTINUES TO MAKE QUALITY AND FUNCTIONALITY A MARK OF THE JUST PRODUCT LINE. TO DO SO REQUIRES THAT WE RESERVE THE RIGHT TO CHANGE PRODUCT INFORMATION WITHOUT NOTICE. FOR THE MOST CURRENT AND ACCURATE INFORMATION REGARDING THE COMPLETE LINE OF JUST SINKS, FAUCETS AND DRAINS, CLICK ON THE *SPEC LINE DRAWINGS* LINK ON OUR WEB SITE AT [www.justmfg.com](http://www.justmfg.com)

Job Name \_\_\_\_\_  
 Customer \_\_\_\_\_  
 Architect/Engineer \_\_\_\_\_

APPROVED FOR MANUFACTURING

MODEL NO. \_\_\_\_\_ QTY. \_\_\_\_\_  
 COMPANY \_\_\_\_\_  
 TITLE \_\_\_\_\_ DATE \_\_\_\_\_  
 SIGNATURE \_\_\_\_\_

**JUST MANUFACTURING COMPANY**

9233 KING STREET . FRANKLIN PARK . ILLINOIS . 60131-2111

PH: 847-678-5150 . FAX: 847-678-6817 . E-MAIL: [custserv@justmfg.com](mailto:custserv@justmfg.com) . [www.justmfg.com](http://www.justmfg.com)

**SUBMITTAL DATA**



**INSTITUTIONAL GROUP**

**SUBMITTAL DATA**

**B-21429-S**

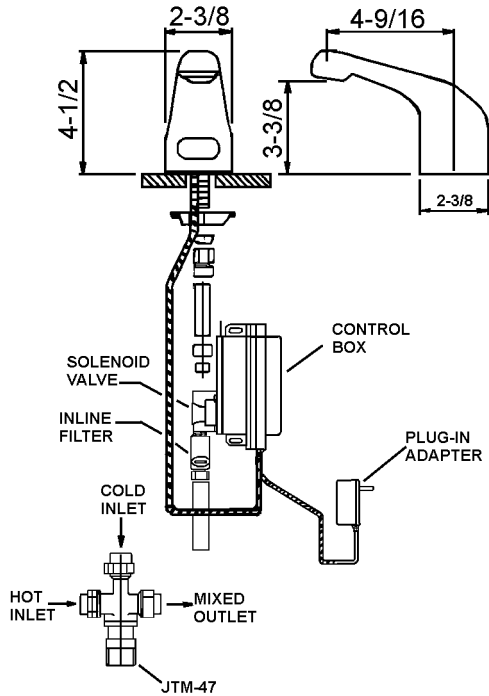


**SL-100-AC - Sensor Operated  
Faucet with Control Module**

Sensor-operated deck mounted lavatory faucet. Chrome plated solid brass construction faucet body. Laminar flow 1.5 GPM aerator .

Control module, AC powered vandal resistant with armored control/power cable. Power adapter , standard plug in type, provides 12V DC output. Slow closing solenoid valve, piston-operated, provides reliable smooth operation without water hammer. In-line filter with clean-out trap. Sensor range adjustable from 6" to 30". Automatic time-out feature adjustable from 0(preset-active until no activity sensed) up to 60 seconds in 15 second intervals. Shut-off delay adjustable to 0, 1(preset), 2,4 or 8 seconds.

Battery powered unit available. Specifications same as above, except provides 6V DC and includes battery holder for four AA batteries in lieu of plug-in power adapter .



**JTM-47 - Thermostatic Mixing Valve**

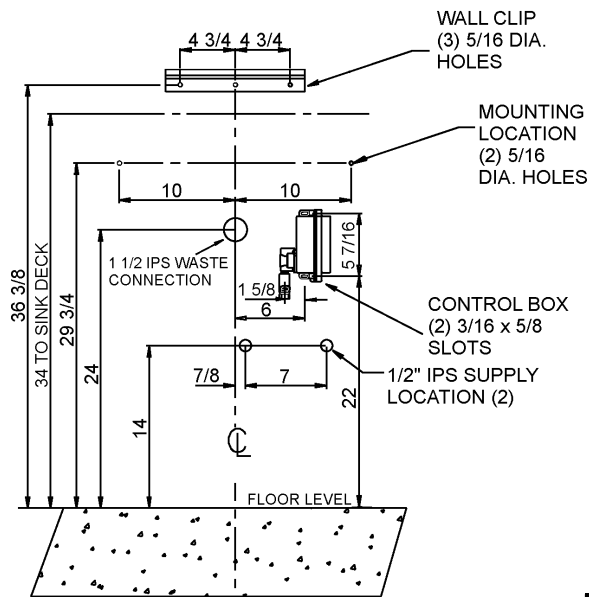
Anti-Scald mixing valve with bronze body with integral check valves and adjustment cap with locking feature. 1/2" sweat union inlet and outlet connections. Temperature range from 60 to 120 F(16 C to 49 C). ASSE Standard 1016 Listed.

**J-ADA-115-FS Drain**

Polished chrome plated flat grid lavatory drain. Includes one piece 1-1/4" O.D. 17 gauge offset tailpiece.

**JT-125 P-Trap**

Chrome plated cast brass 1-1/4" P-trap with cleanout. Drain pipe of 17 ga. chrome plated brass.



**AC OUTLET MUST BE INSTALLED ACCORDING TO LOCAL CODES. INSTALLATION CONTRACTOR RESPONSIBLE FOR COMPLIANCE WITH THOSE CODES.**

JUST MFG. COMPANY CONTINUES TO MAKE QUALITY AND FUNCTIONALITY A MARK OF THE JUST PRODUCT LINE. TO DO SO REQUIRES THAT WE RESERVE THE RIGHT TO CHANGE PRODUCT INFORMATION WITHOUT NOTICE. FOR THE MOST CURRENT AND ACCURATE INFORMATION REGARDING THE COMPLETE LINE OF JUST SINKS, FAUCETS AND DRAINS, CLICK ON THE SPEC LINE DRAWINGS LINK ON OUR WEB SITE AT [www.justmfg.com](http://www.justmfg.com)

<b>JUST MANUFACTURING COMPANY</b>	
9233 KING STREET . FRANKLIN PARK . ILLINOIS . 60131-2111	
PH: 847-678-5150 . FAX: 847-678-6817	
E-MAIL: <a href="mailto:custserv@justmfg.com">custserv@justmfg.com</a> . <a href="http://www.justmfg.com">www.justmfg.com</a>	