

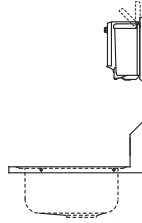
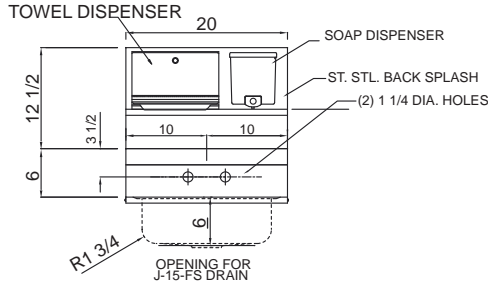
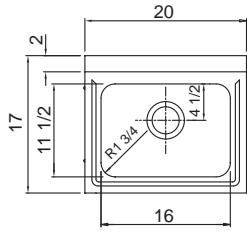


A-544-FS-SD

INSTITUTIONAL GROUP HANDWASH SINK with SOAP/PAPER DISPENSER

SUBMITTAL DATA

NOTE: SOAP AND TOWEL DISPENSER
NOT SHOWN IN TOP VIEW



A-544-FS-SD

SPECIFICATION - HANDWASH SINK NO ENDSPLASHES

Fabricated of 20 gauge type 304 stainless steel. Exposed surfaces polished with a Hand-Blended Just Finish. Integral support bracket at rear. Includes one 14 gauge stainless steel wall clip.

JS-45-TGA Faucet

Backsplash mounted faucet with gooseneck spout and aerator. Chrome plated cast brass body. Replaceable seats. 1/2"-14 NPT male shank and adjustable flanges.

J-15-FS Chrome plated brass drain with flat grid strainer. 1-1/2" O.D. chrome plated tailpiece, 4" long.

JT-150 P-Trap Solid, non adjustable cast brass P-trap with brass slip nut.

SOAP DISPENSER* - High impact resistant ABS. Concealed locking lid. Gray and Black.

PAPER TOWEL DISPENSER* - Satin finish stainless steel. Knob latch. Holds (200) C-Fold or (275) Multi-Fold Towels.

APPROVED FOR MANUFACTURING

MODEL NO.: A-544-FS-SD QTY: _____

JOB NAME: _____

TAG/ITEM: _____

CUSTOMER: _____

SIGNATURE: _____



JUST MFG. COMPANY CONTINUES TO MAKE QUALITY AND FUNCTIONALITY A MARK OF THE JUST PRODUCT LINE. TO DO SO REQUIRES THAT WE RESERVE THE RIGHT TO CHANGE PRODUCT INFORMATION WITHOUT NOTICE. DIMENSIONS MAY VARY AND ARE SUBJECT TO CHANGE WITHOUT NOTICE. NO RESPONSIBILITY IS ASSUMED FOR USE OF SUPERCEDED OR VOIDED DATA. FOR THE MOST CURRENT AND ACCURATE INFORMATION REGARDING THE COMPLETE LINE OF JUST SINKS, FAUCETS AND DRAINS, CLICK ON THE **SPEC LINE DRAWINGS** LINK ON OUR WEB SITE AT www.justmfg.com

JUST MANUFACTURING COMPANY

9233 KING STREET . FRANKLIN PARK . ILLINOIS . 60131-2111

PH: 847-678-5150 . FAX: 847-678-6817 . E-MAIL: custserv@justmfg.com . www.justmfg.com