



**UOIR-ADA-1521** ADA COMPLIANT



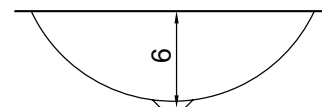
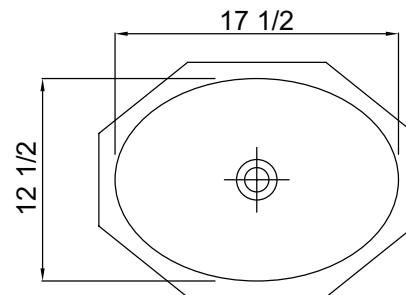
Shown with J-970 lavatory faucet and J-15-FS drain.

Ideal for heavy and light commercial applications, Just ADA compliant lavatory sinks afford heavy grade 20 gauge type 304 stainless steel. Intended for Hotels, Airports, Dormitories, Restaurants and Public lavatory areas. Size and depth to meet stringent standards in demanding environments. This ADA undermount sink depth is 6" maximum allowing for ADA compliance in undermount applications. Supplied with the Just smooth coat ADA compliant undercoating.

**SPECIFICATIONS**

- JUST Undermount Group B, seamless die-drawn construction of 20 gauge type 304, 18-8, stainless steel
- Interior surfaces polished to a non-porous Fully-Blended JUST finish
- Generous capacity Oval undermount lavatory bowl.
- Opening for J-15 drain.
- Fully coated underside insulates for sound and reduces condensation
- Conforms to ASME/ANSI A112.19.3M

**UOIR-1521 SERIES**



OPENING FOR J-15 DRAIN

**UNDERMOUNT OVAL LAVATORY**

UNDERMOUNT OVAL LAVATORY - LESS OVERFLOW - 20 GAUGE			
Model No.	O.D.	I.D.	Depth
UOIR-1521	15-1/4 x 21-1/2	12-1/2 x 17-1/2	6
	ADA COMPLIANT - UNDERMOUNT OVAL LAVATORY LESS OVERFLOW - 20 GAUGE		
UOIR-ADA-1521	15-1/4 x 21-1/2	12-1/2 x 17-1/2	6

**ADA COMPLIANT**

These units are available ADA Compliant with smooth coat sound deadening. Available in depths shown only.



JUST MANUFACTURING COMPANY	9233 KING STREET	FRANKLIN PARK	ILLINOIS	60131
PH: 847.678.5150	FAX: 847.678.6817	EMAIL: CUSTSERV@JUSTMFG.COM	WEBSITE: WWW.JUSTMFG.COM	

# UNDERMOUNT OVAL LAVATORY SINKS - 20 GAUGE

UOIF-ADA-1521  ADA COMPLIANT





Shown with J-970 lavatory faucet and J-115-FS drain.

Ideal for heavy and light commercial applications, Just ADA compliant lavatory sinks afford heavy grade 20 gauge type 304 stainless steel. Intended for Hotels, Airports, Dormitories, Restaurants and Public lavatory areas. Size and depth to meet stringent standards in demanding environments. This ADA undermount sink depth is 6" maximum allowing for ADA compliance in undermount applications. Supplied with the Just smooth coat ADA compliant undercoating.

## SPECIFICATIONS

- JUST Undermount Group B, seamless die-drawn construction of 20 gauge type 304, 18-8, stainless steel
- Interior surfaces polished to a non-porous Fully-Blended JUST finish
- Generous capacity Oval undermount lavatory bowl.
- Opening for lavatory drain.
- Fully coated underside insulates for sound and reduces condensation
- Conforms to ASME/ANSI A112.19.3M

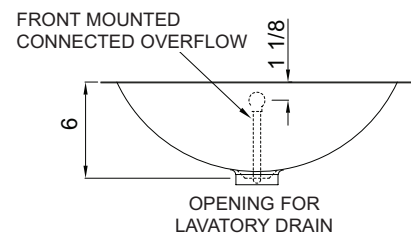
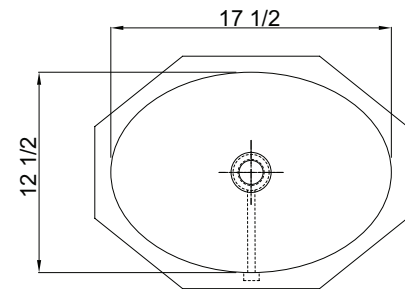
## UNDERMOUNT OVAL LAVATORY

	UNDERMOUNT OVAL LAVATORY - WITH OVERFLOW - 20 GAUGE			
	Model No.	O.D.	I.D.	Depth
	UOIF-1521	15-1/4 x 21-1/2	12-1/2 x 17-1/2	6
	ADA COMPLIANT - UNDERMOUNT OVAL LAVATORY WITH OVERFLOW - 20 GAUGE			
	UOIF-ADA-1521	15-1/4 x 21-1/2	12-1/2 x 17-1/2	6

### ADA COMPLIANT

These units are available ADA Compliant with smooth coat sound deadening. Available in depths shown only.

## UOIF-1521 SERIES



JUST MANUFACTURING COMPANY	9233 KING STREET	FRANKLIN PARK	ILLINOIS	60131
PH: 847.678.5150	FAX: 847.678.6817	EMAIL: CUSTSERV@JUSTMFG.COM	WEBSITE: WWW.JUSTMFG.COM	