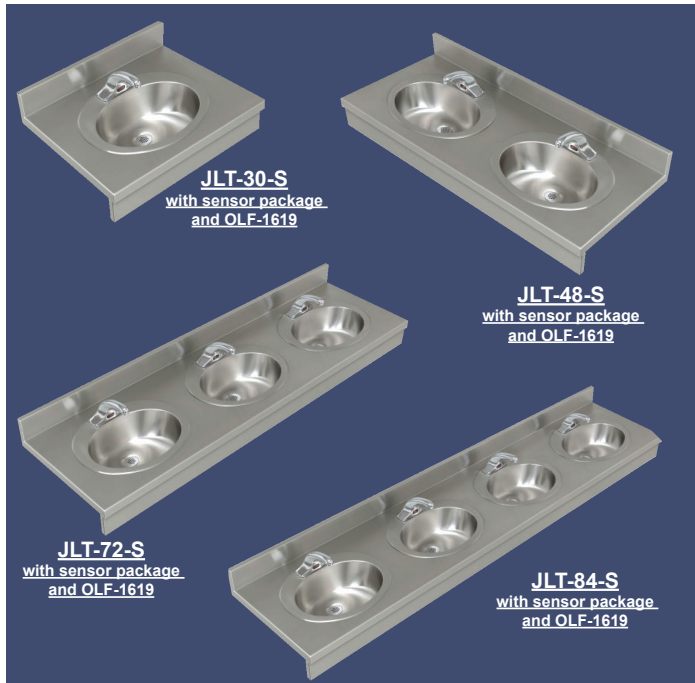


ENVIRO SERIES - LAV SYSTEMS



JLT - Series Lavs Lavatory System with Drop-in Bowls



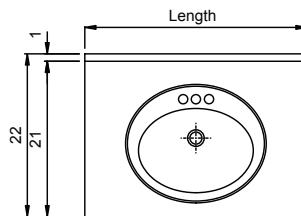
ADA Compliant

- Counters of heavy gauge Type 304 stainless steel seamless construction.
- Three **drop-in** bowls groups to choose from.
Oval - 16 x 19 generous capacity (Standard)
Round or Straight-sided
- Bowls of 18 ga. type 304 stainless steel.
- Counter and bowls to have a No. 4 satin finish.
- 12 Ga. stainless steel mounting brackets - standard
- Sensor packages include;
 - sensor faucet,
 - thermostatic mixing valve and
 - ADA Compliant grid drain and overflow
- Standard 22" O.A. dimension front-to-back.

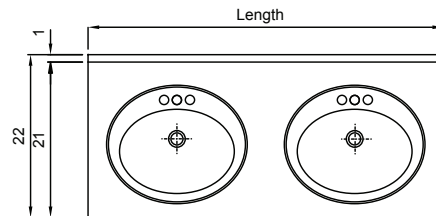
Optional ADA Compliant 4" offset apron component to match counter lengths.

| Model | Length | Stations | Mark X |
|----------|--------|----------|--------|
| JLT-24-S | 24" | 1 | |
| JLT-30-S | 30" | 1 | |
| JLT-36-S | 36" | 1 | |
| JLT-42-S | 42" | 1 | |
| JLT-48-S | 48" | 2 | |
| JLT-54-S | 54" | 2 | |
| JLT-60-S | 60" | 2 | |
| JLT-66-S | 66" | 2 | |
| JLT-72-S | 72" | 3 | |
| JLT-84-S | 84" | 4 | |

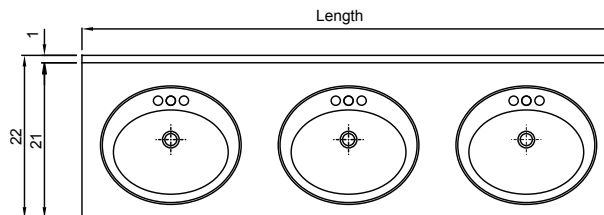
Custom counter sizes available



Single



Double



Triple

DROP-IN BOWL OPTIONS



CIF-ADA
CIR-ADA Series



OLF-1619
(Standard)



SLF-ADA Series
SL-ADA Series

OPTIONAL as Integral Bowl



Available In:
Oval (shown), Round,
or Straight-Sided configurations

See bowl selection chart on back

Specification Data

JUST MANUFACTURING COMPANY

9233 KING STREET . FRANKLIN PARK . ILLINOIS . 60131-2111

PH: 847-678-5150 . FAX: 847-678-6817 . E-MAIL: custserv@justmfg.com . www.justmfg.com



DROP-IN SINKS



ADA Compliant

DROP-IN SINK SPECIFICATION

Seamless die-drawn construction of type 304, 18-8 stainless steel. Interior and top surfaces polished to a non-porous Hand-Blended Just Finish, with a highlighted bowl rim. Smooth, fully coated underside insulates for sound, and reduces condensation. Straight-sided compartment with 1 3/4" radius corners provides greater capacity. Self-rimming top mount Grip-Rim Plus* stainless steel mounting channels. Oval and round lavatories include clips and stainless steel mounting channel. (Specify drop-in sink by marking table below).

OLR / OLF - OVAL

| X | MODEL NO. | A | B | C | D | DEPTH |
|---|-----------------------|----|----|--------|--------|-------|
| | OLF-1619 ¹ | 16 | 19 | 11-3/8 | 15-1/2 | 6 |
| | OLR-1619 ² | 16 | 19 | 11-3/8 | 15-1/2 | 6 |

OIF / OIR - OVAL

| X | MODEL NO. | A | B | C | D | DEPTH |
|---|-----------------------|----|----|--------|--------|-------|
| | OIF-1013 ¹ | 16 | 19 | 11-3/8 | 15-1/2 | 5-1/8 |
| | OIR-1013 ² | 16 | 19 | 11-3/8 | 15-1/2 | 5-1/8 |

CIF-ADA / CIR-ADA - ROUND

| X | MODEL NO. | A | B | C | D | DEPTH |
|---|-------------------------|--------|---|----|---|-------|
| | CIF-ADA-12 ¹ | 14-1/4 | | 12 | | 6 |
| | CIF-ADA-14 ¹ | 16-1/4 | | 14 | | 5-1/2 |
| | CIF-ADA-16 ¹ | 17-1/4 | | 15 | | 5-1/2 |
| | CIR-ADA-12 ² | 14-1/4 | | 12 | | 6 |
| | CIR-ADA-14 ² | 16-1/4 | | 14 | | 5-1/2 |
| | CIR-ADA-16 ² | 17-1/4 | | 15 | | 5-1/2 |

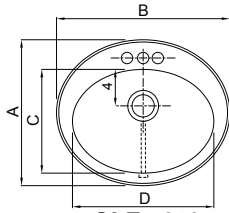
SLF-ADA / SL-ADA - SERIES

| X | MODEL NO. | A | B | C | D | DEPTH ³ |
|---|---------------------------------|--------|----|--------|----|--------------------|
| | SLF-ADA-1617-A-GR ¹ | 16 | 17 | 10 | 14 | 4-1/2 to 6-1/2 |
| | SLF-ADA-17519-A-GR ¹ | 17-1/2 | 19 | 11-1/2 | 16 | 4-1/2 to 6-1/2 |
| | SLF-ADA-2019-A-GR ¹ | 20 | 19 | 14 | 16 | 4-1/2 to 6-1/2 |
| | SL-ADA-1617-A-GR ² | 16 | 17 | 10 | 14 | 4-1/2 to 6-1/2 |
| | SL-ADA-17519-A-GR ² | 17-1/2 | 19 | 11-1/2 | 16 | 4-1/2 to 6-1/2 |
| | SL-ADA-2019-A-GR ² | 20 | 19 | 14 | 16 | 4-1/2 to 6-1/2 |

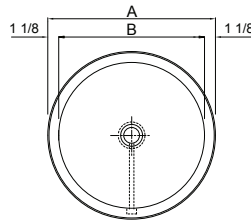
¹INCLUDES OVERFLOW ; ²NO OVERFLOW ; ³SPECIFY DEPTH IN 1/2" INCREMENTS

NOTE: Additional sizes from the Just Mfg line are available.

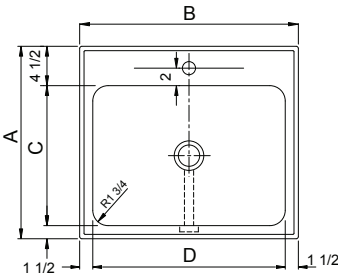
Specification Data



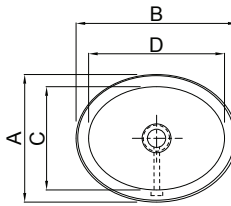
OLF-1619
(Standard)



CIF-ADA Series



SLF-ADA* - Series



OIF-1013

SENSOR PACKAGES INCLUDE:



JSL-300-AC / **JSL-300-B**

Deck mount, non-mixing, automatic faucet with chrome plated, solid brass 4" centerset construction, three hole punch. "-AC" (includes plug-in power adapter) or "-B" (includes battery holder with (4) AA batteries).



SENSOR FAUCET SPECIFICATION

Prest/adjustable sensor beam angle, sensor range is preset/adjustable, automatic time-out preset at 30 seconds, adjustable to 0, 15, or 60 seconds. Shut-off delay preset at 1 second, adjustable to 0, 2, 4, or 8 seconds. Amored/vandal resistant control cable, wall mountable/vandal resistant and water resistant control box, 3/8" opper supply tube, in-line filter and mounting hardware .05 GPM vandal resistant laminar flow control, 6V slow-closing solenoid valve. Specify "-AC" (includes plug-in power adapter) or "-B" (includes battery holder with (4) AA batteries).

JTM-47

Thermostatic mixing valve, 1/2" theraded union with sweat connections. All bronze removeable pisston and thermal motor. Buna-N; EPDM O rings. ASSE 1016 listed. One unit included per counter.



J-ADA-115-FS

Polished chrome plated cast brass flat grid lavatory drain with one piece 1-1/4" O.D. 17 ga. offset tailpiece.



ADDITIONAL FAUCET OPTIONS:

JSL-100-AC



JSL-100-B

Deck mount, non-mixing, automatic sensor faucet with chrome plated, solid brass construction, single hole punch. Specify "-AC" (includes plug-in power adapter) or "-B" (includes battery holder with (4) AA batteries).



JM-300

Deck mounted, 4" centerset slow closing adjustable metering faucet. .5 GPM maximum flow rate. Cast brass body. Polished chrome finish. includes vandal resistant aerator.



JM-310

Single control, slow closing adjustable metering faucet. .5 GPM maximum flow rate. Cast brass body, rigid spout, Polished chrome finish.



JV-1139-A-W4



Lavatory centerset faucet less drain with wrist blade handles. . Solid cast brass body, replaceable seats and areator. Flow rate 2.5 GPM at 80PSI.



JUST MANUFACTURING COMPANY

9233 KING STREET . FRANKLIN PARK . ILLINOIS . 60131-2111

PH: 847-678-5150

FAX: 847-678-6817

E-MAIL: custserv@justmfg.com

www.justmfg.com