

Wall-Hung Lavatory - ADA Compliant  
**WHLE-14-S-CP**



**Includes:**



JSGN-6  
Sensor activated  
Gooseneck faucet



JSPD-801  
Hands-free  
Soap Dispenser



JHD-ADA-1200  
Automatic  
Hand Dryer



J-115-FS  
Lavatory Drain  
with Overflow

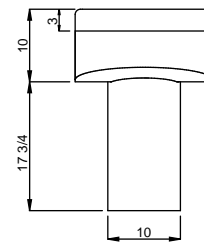
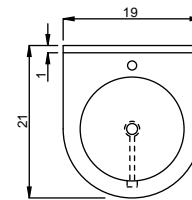
**Hands-Free - Lavatory Package**



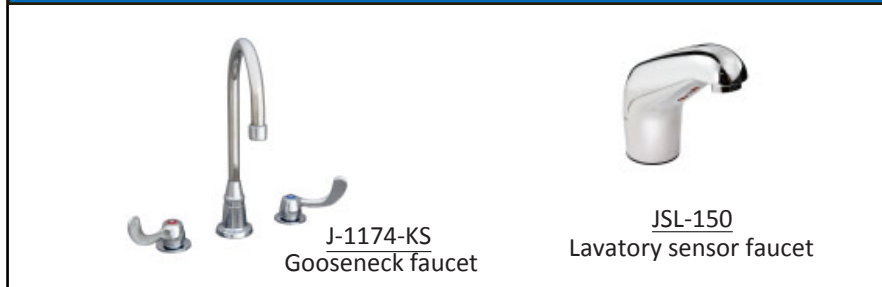
Ideal for heavy and light commercial applications, Just ADA compliant lavatory sinks afford heavy grade 18 gauge type 304 stainless steel. Intended for Hotels, Airports, Dormitories, Restaurants and Public Lavatory areas. Size and depth to meet stringent standards in demanding environments.

**SPECIFICATIONS**

- JUST Commercial ADA Compliant Lavatory Group.
- 18 gauge. type 304, 18-8 stainless steel.
- Generous capacity 14" diameter round bowl.
- Integra-Flow Lav System.
- Vandal resistant, stainless steel enclosure.
- Non-porous Hand-Blended Just finish.
- Just J-115-FS lavatory drain.
- Underside of bowl fully coated, insulates for sound.
- INCLUDES:
  - JSGN-6 sensor activated gooseneck faucet
  - JSPD-801 - Hands-Free soap dispenser
  - JHD-ADA-1200 ADA Compliant Automatic Hand Dryer
  - J-115-FS- Lavatory drain with overflow.
  - JTM-47 thermostatic mixing valve
  - JT-150 P-trap with cleanout.



**Additional Faucet Options**



J-1174-KS  
Gooseneck faucet

JSL-150  
Lavatory sensor faucet



JUST MANUFACTURING COMPANY		9233 KING STREET	FRANKLIN PARK	ILLINOIS	60131
PH: 847.678.5150	FAX: 847.678.6817	EMAIL: CUSTSERV@JUSTMFG.COM		WEBSITE: WWW.JUSTMFG.COM	





# WHLV-175-S-CP

ADA Compliant Wall-Hung Lav

Commercial Grade



### Includes:



JSGN-6  
Sensor activated  
Gooseneck faucet



JSPD-801  
Hands-free  
Soap Dispenser



JHD-ADA-1200  
Automatic  
Hand Dryer



J-115-FS  
Lavatory Drain  
with Overflow

### Hands-Free - Lavatory Package

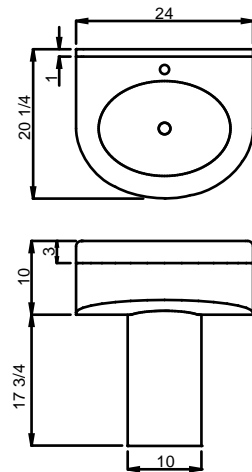
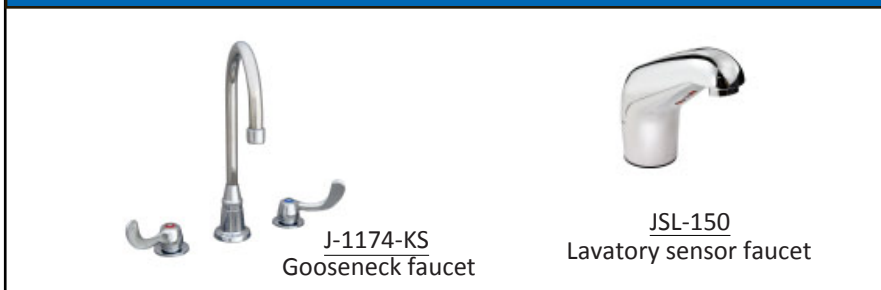


Ideal for heavy and light commercial applications, Just ADA compliant lavatory sinks afford heavy grade 18 gauge type 304 stainless steel. Intended for Hotels, Airports, Dormitories, Restaurants and Public Lavatory areas. Size and depth to meet stringent standards in demanding environments.

### SPECIFICATIONS

- JUST Commercial ADA Compliant Lavatory Group.
- 18 gauge. type 304, 18-8 stainless steel.
- Generous capacity 12-1/2 x 17 1/2 oval bowl.
- Integra-Flow Lav System.
- Vandal resistant, stainless steel enclosure.
- Non-porous Hand-Blended Just finish.
- Just J-115-FS lavatory drain.
- Underside of bowl fully coated, insulates for sound.
- **INCLUDES:**
  - JSGN-6 sensor activated gooseneck faucet.
  - JSPD-801 - Hands-Free soap dispenser.
  - JHD-ADA-1200 ADA Compliant Automatic Hand Dryer.
  - J-115-FS- Lavatory drain with overflow.
  - JTM-47 thermostatic mixing valve
  - JT-150 P-trap with cleanout.

### Additional Faucet Options



JUST MANUFACTURING COMPANY		9233 KING STREET	FRANKLIN PARK	ILLINOIS	60131
PH: 847.678.5150	FAX: 847.678.6817	EMAIL: CUSTSERV@JUSTMFG.COM		WEBSITE: WWW.JUSTMFG.COM	



WHLV175K13