

# Just

## ACADEMIC GROUP

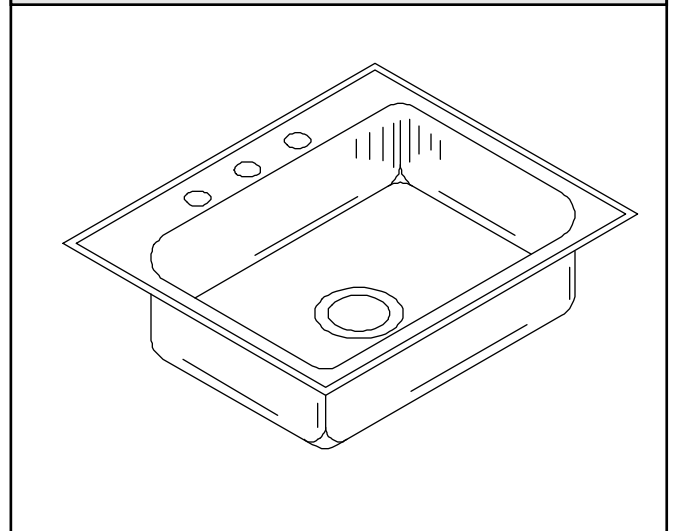


### SPECIFICATION

Seamless die-drawn construction of type 304, 18-8 stainless steel. Interior and top surfaces polished to a non-porous fully-blended JS-4 finish with highlighted bowl rim. Fully coated underside insulates for sound, and reduces condensation. Straight-sided compartment with 1 3/4" radius corners provides greater capacity. Self-rimming top mount Grip-Rim Plus with 300 series stainless steel mounting channels. Drain punch #35 centered for Just J-35 unless otherwise specified.

## SL-ADA - SERIES - A - 18 GA.

### GENEROUS CAPACITY - LEDGE TYPE SINGLE COMPARTMENT



SUBMITTAL DATA

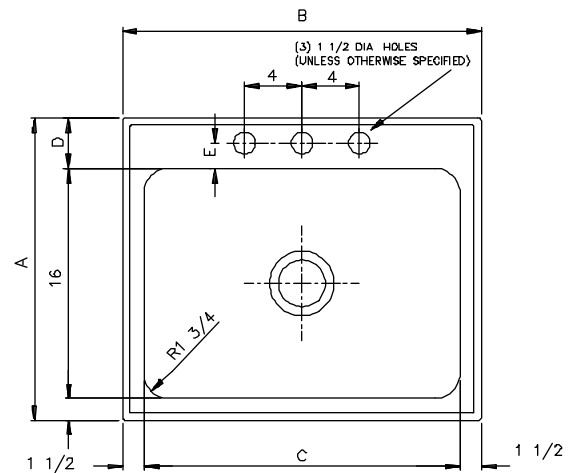
#### To be specified :

■ Faucet hole punching:

- (1) Hole Centered
- (2) Holes on 4" centers
- (3) Holes on 4" centers (illustrated)
- (4) Holes

Alternate Punching:

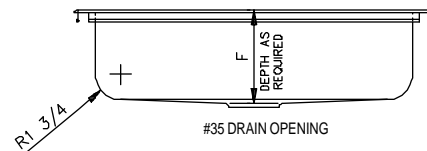
Faucet Model: \_\_\_\_\_  
Punching required: \_\_\_\_\_



#### DRAIN LOCATION MUST BE SPECIFIED:

- CENTER (SHOWN)
- LEFT REAR
- RIGHT REAR
- CENTER REAR

#### LOCATIONS MUST BE A MINIMUM OF 4 1/2" FROM THE BOWL ALL.



FUNCTIONAL DESIGN, QUALITY, AND SPECIFICATIONS LISTED DESCRIBE THE **JUST** STANDARD OF QUALITY. WHEN MAKING COMPARISONS TO OTHER OFFERINGS, INSIST ON THE **JUST** QUALITY OF CONSTRUCTION.

Job Name \_\_\_\_\_  
Customer \_\_\_\_\_  
Architect/Engineer \_\_\_\_\_

MODEL NO.	A	B	C	E	F	G	CUTOUT*
SL-ADA-2125-A-GR	21	25	22 3	1	4	to 6	19 x 16
SL-ADA-2219-A-GR	21	19	16 4	2	4	to 6	19 x 18
SL-ADA-2222-A-GR	22	22	19 4	1	4	to 6	20 x 16
SL-ADA-2225-A-GR	22	25	22 4	1	4	to 6	20 x 18

\* Cutout dimensions shown (Front-to-Back) x (Left-to-Right) - Corners of cutout may be square or up to 1/2" radius.

APPROVED FOR MANUFACTURING

MODEL NO. \_\_\_\_\_ QTY. \_\_\_\_\_

COMPANY \_\_\_\_\_

TITLE \_\_\_\_\_ DATE \_\_\_\_\_

SIGNATURE \_\_\_\_\_

*Just* MANUFACTURING COMPANY  
9233 KING STREET, FRANKLIN PARK, ILLINOIS 60131  
PHONE: (708) 678-5150 FAX: (708) 678-6817