

# Just CONGENIALITY GROUP

## SPECIFICATION

Seamless die-drawn construction of type 304, 18-8 stainless steel. Interior and top surfaces polished to a non-porous Hand-Blended Just Finish with highlighted bowl rim. Fully coated underside insulates for sound, and reduces condensation. Straight-sided compartment with 1 3/4" radius corners provides greater capacity. Self-rimming top mount Grip-Rim Plus with 300 series stainless steel mounting channels. Conforms to ASME/ANSI A112.19.3M. Drain punch #15 centered for Just J-15 unless otherwise specified.

### INCLUDES:

- (2) Stainless steel bottle holders.
- (1) Cutting board.

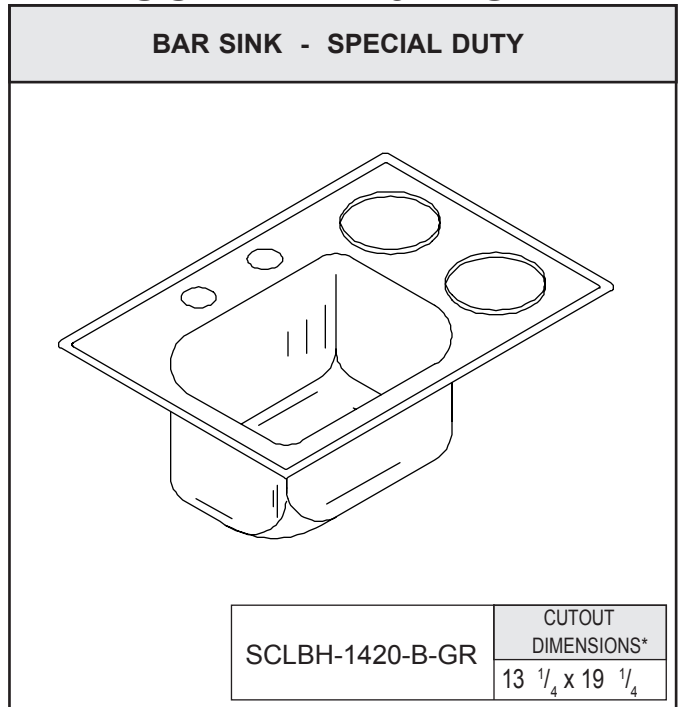
### To be specified :

#### Faucet hole punching:

- (1) Hole Centered
- (2) Holes on 4" centers (illustrated)
- Alternate Punching: \_\_\_\_\_  
Faucet Model: \_\_\_\_\_  
Punching required: \_\_\_\_\_

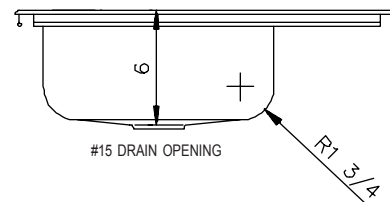
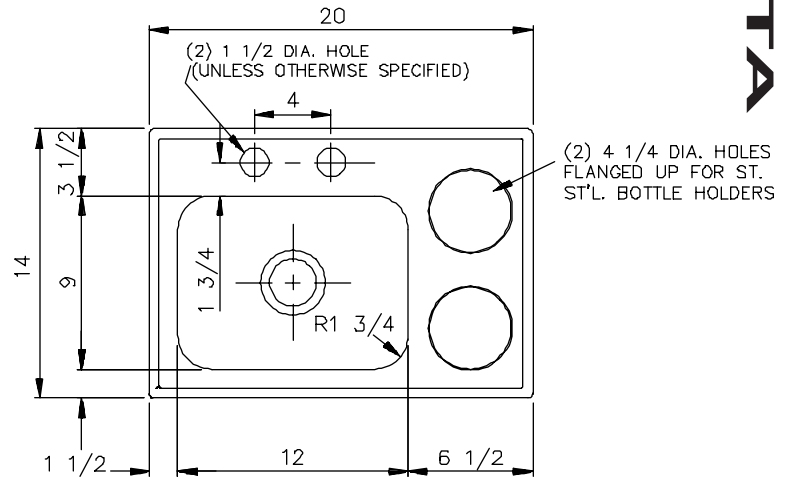
## SCLBH-1420-B-GR

### BAR SINK - SPECIAL DUTY



SCLBH-1420-B-GR	CUTOUT DIMENSIONS*
	13 1/4 x 19 1/4

\* Cutout dimensions shown (Front-to-Back) x (Left-to-Right) - corners of cutout may be square or any radius up to 1/2".



SUBMITTAL DATA

Job Name _____
Customer _____
Architect/Engineer _____
APPROVED FOR MANUFACTURING
MODEL NO. _____ QTY. _____
COMPANY _____
TITLE _____ DATE _____
SIGNATURE _____

FUNCTIONAL DESIGN, QUALITY, AND SPECIFICATIONS LISTED DESCRIBE THE **JUST** STANDARD OF QUALITY. WHEN MAKING COMPARISONS WITH OTHER OFFERINGS, INSIST ON THE **JUST** QUALITY OF CONSTRUCTION.

*Just* MANUFACTURING COMPANY  
9233 KING STREET, FRANKLIN PARK, ILLINOIS 60131  
PHONE: (847) 678-5150 FAX: (847) 678-6817